



OREUS d.o.o za usluge
Božidarevićeva 13
10000 ZAGREB, CROATIA
Tel: +385 1 2484286
Fax: +385 1 2305775
VAT: 00735106343

About CubePlayer

CubePlayer

This program is licensed to:

Name	Demo License			
Serial number	QKLBCS	1SUQ3F	VTEZW3	YEJS3M
Edition	Trial			
License mode	Standard license mode			

Version: 2.5.2009.0402

Copyright (c) 1993. - 2009. by SoftPro Tetral, Croatia

Warning: This computer program is protected by copyright law and international treaties.

Unauthorized reproduction or distribution of this program, or any portion of it, may result in severe civil and criminal penalties, and will be prosecuted to the maximum extent possible under law.

Change license OK

Thank you .. License info

Update instructions

About update

This Update contains upgrade to CubePlayer 2.7 version.

To run CubePlayer 2.7 version features any user needs legal and valid license file from CubePlayer version prior to 2.7.

If you have only CubePlayer 2.0 license you will be able to run updated CubePlayer 2.0 version of software.

If you wish to upgrade to CubePlayer 2.7 please visit our [web page](#) to see how to upgrade.

Thank you for trying our software.

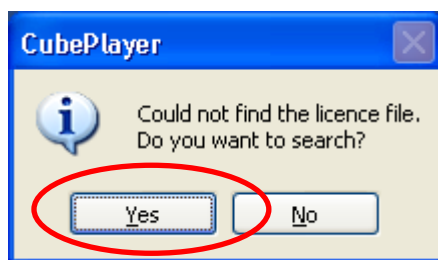
Update

To perform Update you have either to download Update package from our web site or to use update from this package placed in folder **CP-U-27XX.XXXX**.
However, we strongly recommend downloading package from our web site.

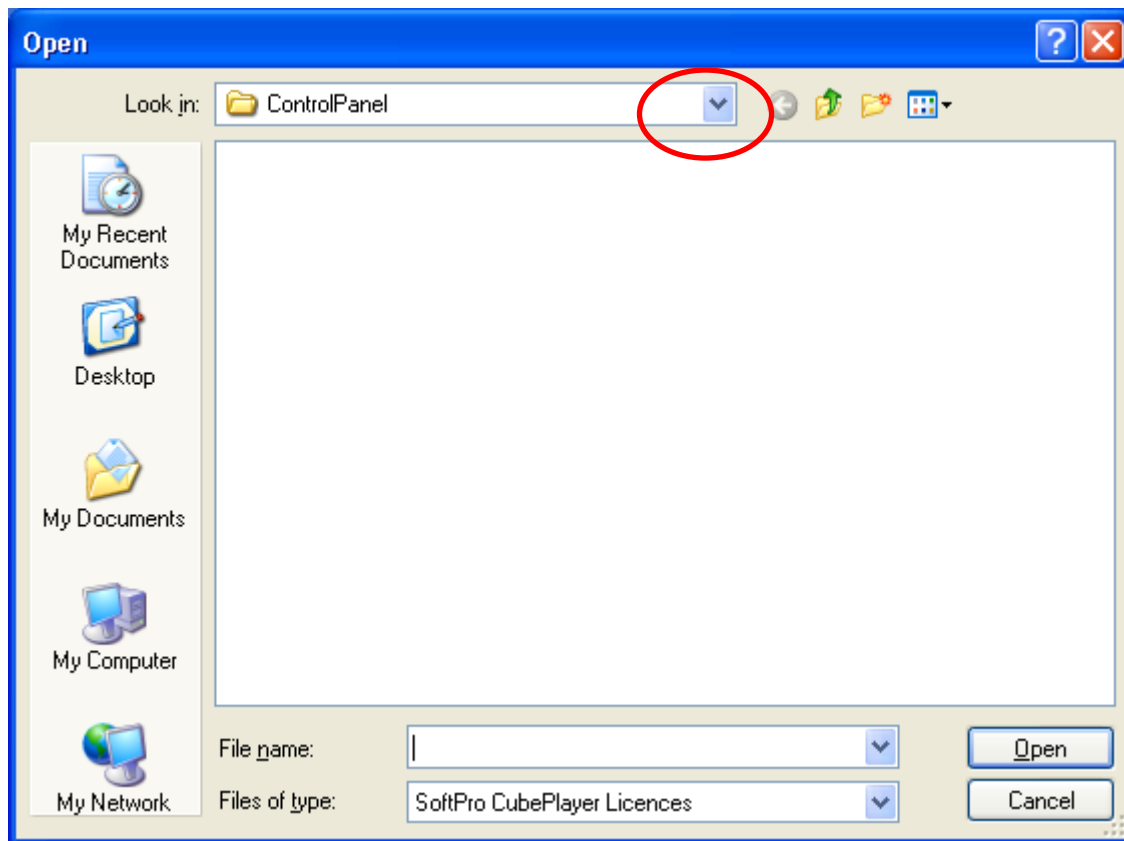
1. Unpack zipped files to any place
2. Select content of **CPxxxxxx** folder
3. Copy it
4. Navigate to application root folder usually **C:\Program Files\SoftPro Software\CubePlayer 2.0**
5. Paste content of **CPxxxxxx** folder here
6. Answer to all question **Yes**

Registration procedures

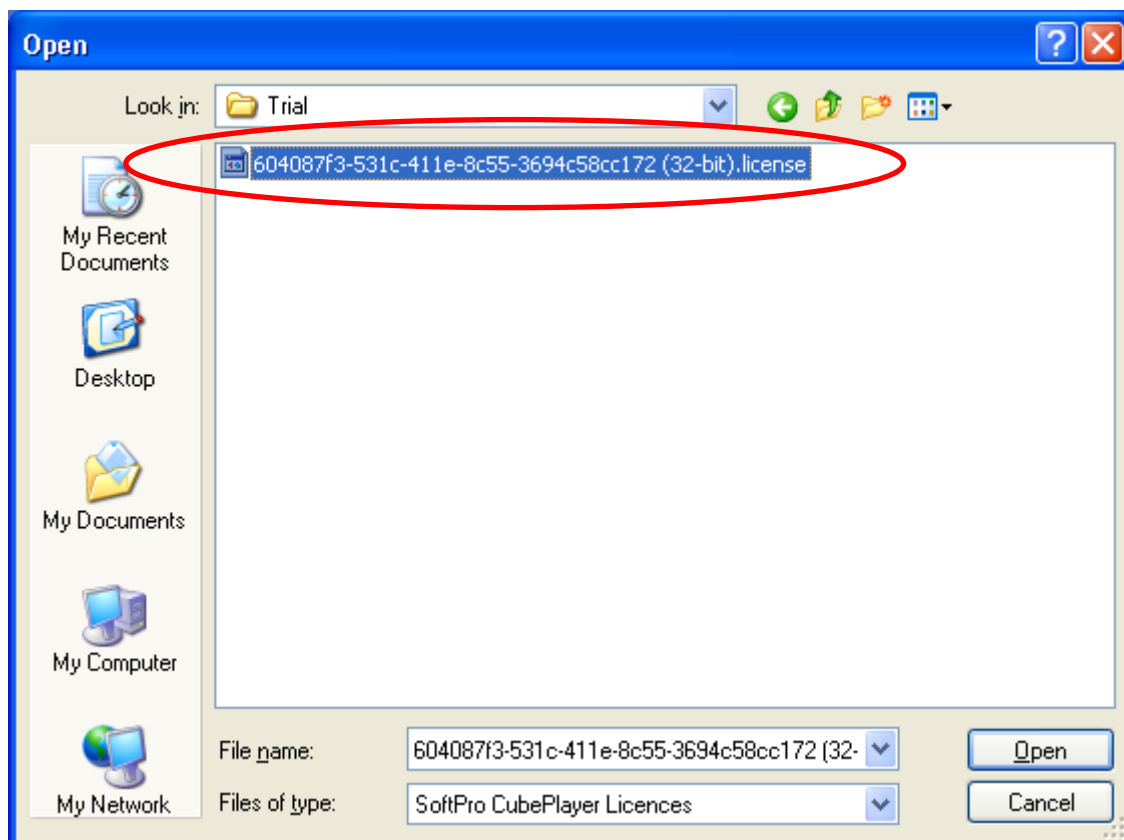
Select CubePlayer icon and run application. Immediately after you will see the following picture:



Select **Yes** to continue.




Now, navigate to the place where you have unpacked license folder **Trial**.



Select appropriate license (32-bit) or (64-bit).

Register product


 Product name: **SoftPro CubePlayer**

Product edition: **Trial Edition**

Product version: **2.0**

Product copyright: **Copyright (c) 2007 by SoftPro Tetral d.o.o., Zagreb, Croatia**

License mode: **Master**

 Please type your user name and serial number exactly as they appear in your licensing information that you have been given to you by the vendor, or import them directly into this dialog by clicking the 'Import...' button.

Registered user name:


Serial number:

Import... **Cancel** **Accept**

Now select button **Import** ... in a lower left corner. CubePlayer will automatically take you to your license info file.

Select file

Look in: **Trial**

 **604087f3-531c-411e-8c55-3694c58cc172 (32-bit).licenseInfo**

My Recent Documents

Desktop

My Documents

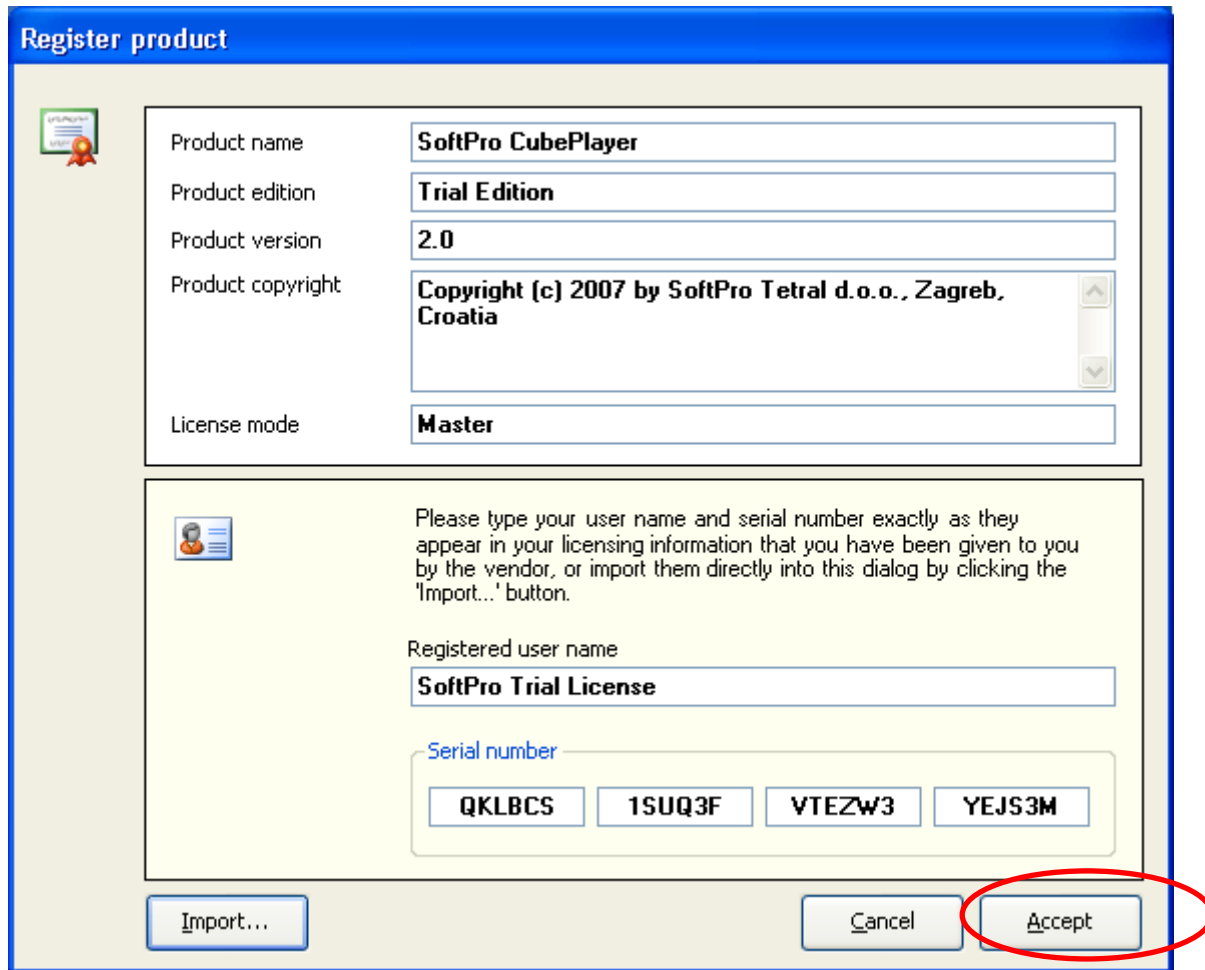
My Computer

My Network

File name: **604087f3-531c-411e-8c55-3694c58cc172 (32-bit)** **Open**

Files of type: **License info files** **Cancel**

Select that file and select **Open**.



The 'Register product' dialog box has a blue title bar. It contains several input fields: 'Product name' (SoftPro CubePlayer), 'Product edition' (Trial Edition), 'Product version' (2.0), 'Product copyright' (Copyright (c) 2007 by SoftPro Tetral d.o.o., Zagreb, Croatia), and 'License mode' (Master). Below these is a section for user registration with a text box for 'Registered user name' (SoftPro Trial License) and a 'Serial number' section containing four buttons: QKLBCS, 1SUQ3F, VTEZW3, and YEJS3M. At the bottom are 'Import...', 'Cancel', and 'Accept' buttons. The 'Accept' button is circled in red.

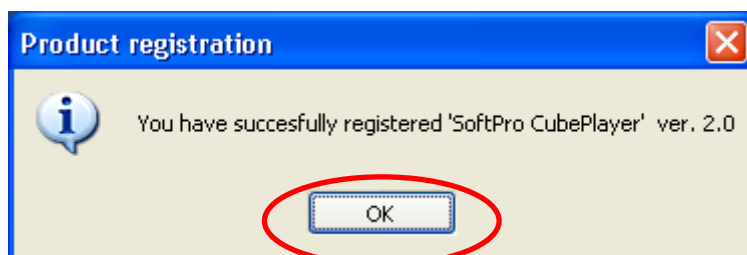
Typically, you will get a so-called 'demo' license file intended for the testing purposes. This is full functional version of SoftPro CubePlayer Enterprise edition licensed in a Master mode.

Validity is 60 days since registration.

First, you have to select the appropriate license level (Standard, Professional or Enterprise) and supply two (2) different sets of license keys.

C:\Documents and Settings\USER.NAME\My Documents\SoftPro.CubePlayer.Client\CPLicenses

After selecting Accept new dialog will appear

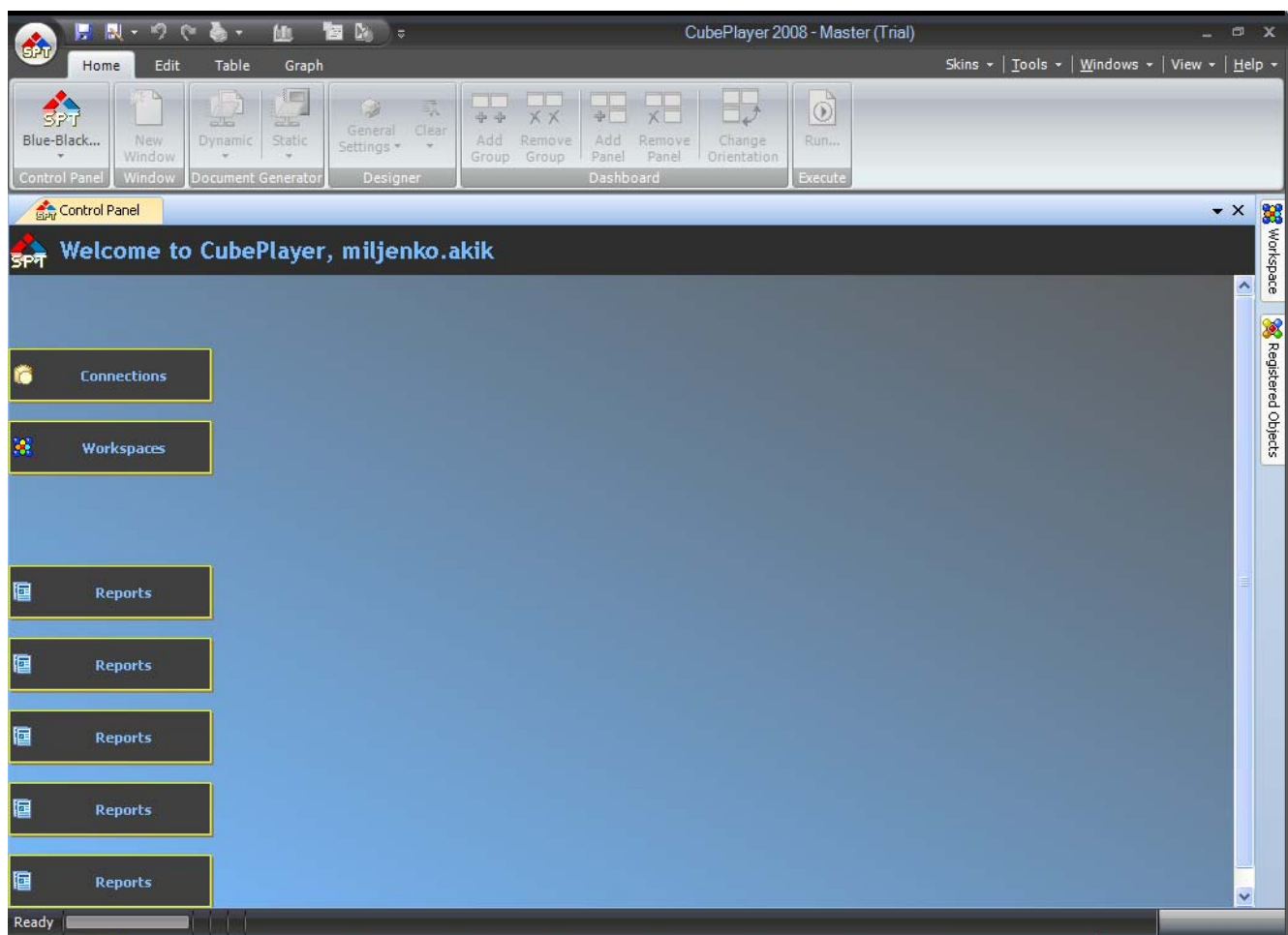


The 'Product registration' dialog box has a blue title bar and a close button. It contains an information icon and the text 'You have succesfully registered 'SoftPro CubePlayer' ver. 2.0'. At the bottom is an 'OK' button, which is circled in red.

Confirm selecting **Ok**.

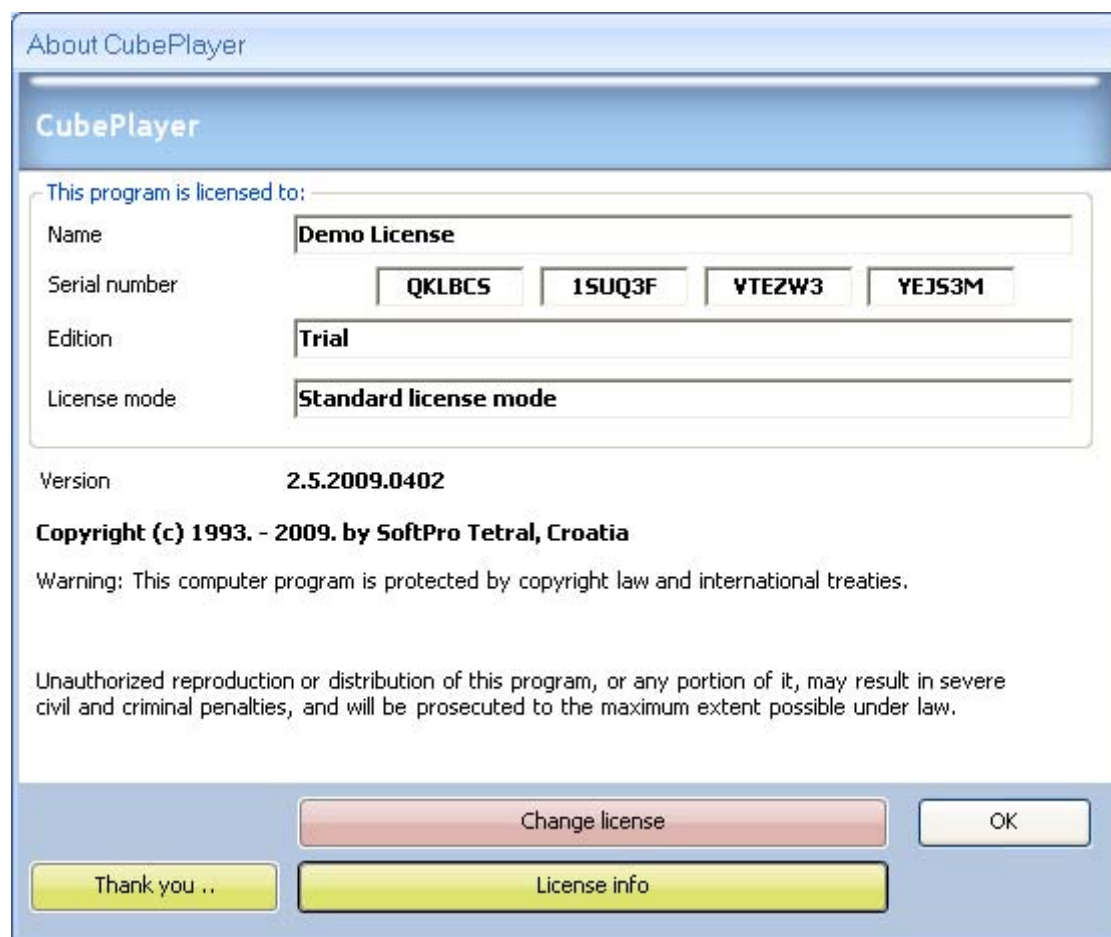
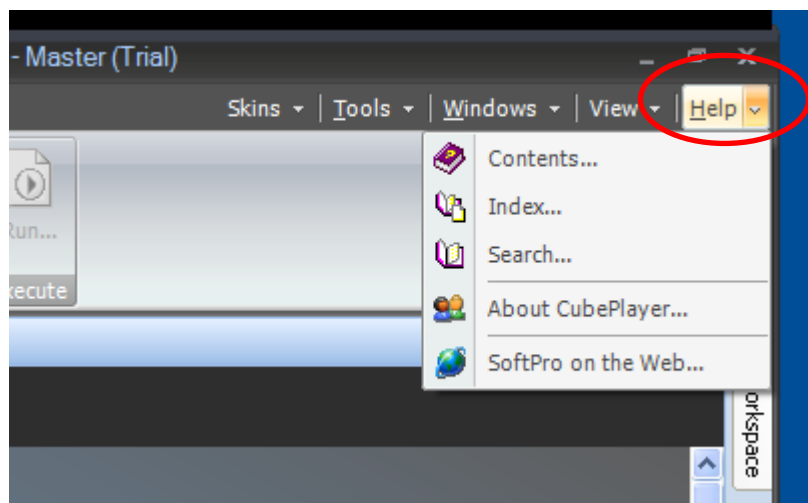


CubePlayer Trial Version Splash screen will appear, and little bit after Application itself.



Viewing the contents of your license file

To see the contents of your license file, open the About SoftPro CubePlayer 2.0 dialog inside Main menu Help item



and click on the **License Info...** button to open the license dialog is shown in the following picture:

License information



SoftPro CubePlayer

License ID:	b2cecc4d-0bea-4309-bc47-958004d39d61
License created:	2. travanj 2009
License type:	Trial license
License registration date:	Not registered
License expiration date:	Not registered
License mode:	Standard license

Product ID:	c2992e42-4ca7-432f-9c22-fe54fe97795d
Product edition:	Trial edition
Product version:	2.5
Product description:	CubePlayer - Microsoft Analysis Server Client
Product copyright:	Copyright (c) 2009 by SoftPro Tetral d.o.o., Zagreb, Croatia

Vendor name:	SoftPro Tetral d.o.o.
Vendor address:	SoftPro Tetral d.o.o. Božidarevićeva 13 10000 Zagreb CROATIA
Vendor official WEB:	http://www.softpro.hr

Close